

RUGGEDIZED POP-UP

Part Number SP-1010 | SP-1015 | SP-1020

Portable and Durable Tent



ISO 9001:2008 Registered Company



The Ruggedized Pop-Up series compliments the standard Western Shelter product line in scenarios where a smaller footprint is required. These are not your average big box store pop-ups, our Ruggedized Pop-Up shelters are built for the demands of repeated use. This shelter is seriously tough, with anodized hexagonal aluminum legs, and a unique level frame structure that adds strength but not weight versus a traditional pyramid frame design. The cover set is equally durable, with 600 denier polyester, or vinyl options. The Ruggedized Pop-Up also comes in three sizes, and two duty grades to meet your budget and use case needs.

Key Features and Benefits

- Commercial anodized aluminum for lightweight strength and durability
- Compact package for effortless transportation and portability
- Superb visual smooth aluminum finishing for professional presentation
- 600 denier polyester offers black-out capability
- Optional wall panels attach easily with hook and loop
- Zipper wall closure for easy access
- Available in a variety of colors

Standard Duty Shelter	Part Number	Wall Panel Option	Color Options*	Vinyl Cover Option**
10' x 10' Shelter Includes Frame, Roof, Dust Cover	SP-1010	4 each PA-SPWP10	BK, WT, GR, FG, NB, RB, RD, OR, YL, BG	V
10' x 15' Shelter Includes Frame, Roof, Dust Cover	SP-1015	2 each PA-SPWP10 + 2 each PA-SPWP15	BK, WT, GR, FG, NB, RB, RD, OR, YL, BG	V
10' x 20' Shelter Includes Frame, Roof, Dust Cover	SP-1020	6 each PA-SPWP10	BK, WT, GR, FG, NB, RB, RD, OR, YL, BG	V
Heavy-Duty Frame Shelter				
10' x 10' Shelter Includes Frame, Roof, Dust Cover	SP-1010HD	4 each PA-SPWP10	BK, WT, GR, FG, NB, RB, RD, OR, YL, BG	
10' x 15' Shelter Includes Frame, Roof, Dust Cover	SP-1015HD	2 each SP-1015 + 2 each SP1015	BK, WT, GR, FG, NB, RB, RD, OR, YL, BG	
10' x 20' Shelter Includes Frame, Roof, Dust Cover	SP-1020HD	6 each SP-1020	BK, WT, GR, FG, NB, RB, RD, OR, YL, BG	
Individual Wall Panels				
10' Wall Panel	PA-SPWP10		BK, WT, GR, FG, NB, RB, RD, OR, YL, BG	V
15' Wall Panel	PA-SPWP15		BK, WT, GR, FG, NB, RB, RD, OR, YL, BG	V
Wall Panel Options				
Window	WN (Add to end of panel part #)			
Door	DO (Add to end of panel part #)			

*Add 2 letter color code to end of shelter part#. BLACK-BK, WHITE-WT, GREEN-GR, FOREST GREEN-FG, NAVY BLUE-NB, ROYAL BLUE-RB, RED-RD, ORANGE-OR, YELLOW-YL, BEIGE-BG

**Add V to end of part # if vinyl is the desired cover material

RUGGEDIZED POP-UP

Part Number SO-HWTDSK4 | SO-HWTDSB4 | SO-HWTDSRB4 | SO-HWTDSHD4
Stake Down Options



SO-HWTDSK4



SO-HWTDSB4

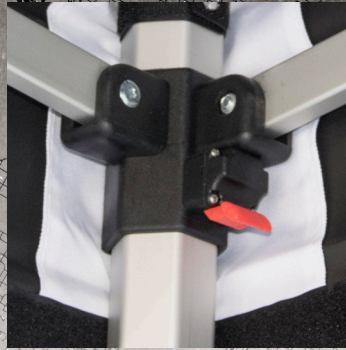


SO-HWTDSRB4



SO-HWTDSHD4

Standard Duty Shelter Details



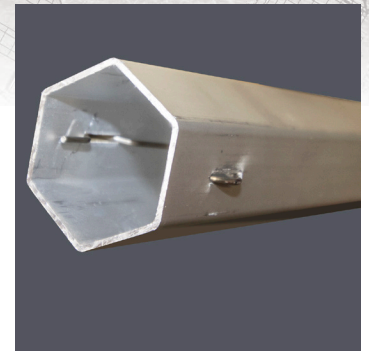
High Quality ABS Fittings For Frame Support



Crank Up Technology Adjusts Peak Tension



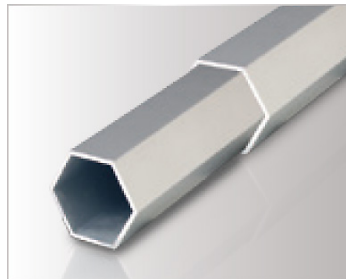
Reinforced Truss Bars For Stability



45 mm Hexagonal Legs For Frame Durability

Part Number	Dimensions
SO-HWTDSB4	High-wind tie-down Sand Bag Kit for SP-1010, SP-1015, SP-1020. Set of 4
SO-HWTDSK4	High-wind tie-down Stake Kit for SP-1010, SP-1015, SP-1020. Set of 4
SO-HWTDSHD4	High-wind tie-down Heavy Wind tie down assembly. Includes 3/8" rope with ratchet assembly. Sold as individual rope/ratchet set.
SO-HWTDSRB4	High-wind tie-down 30lbs Rubber Weight. Sold as individual weight

Heavy Duty Shelter Details



50mm Hexagonal Legs



Fiberglass Fittings



Oversized Triangle Footplates



Reinforced Oval Truss Bars